

# Our Creative Community: Plates Inspired by Janine Burrows

[By Natalie Deane](#)

In the third stage of the '[Our Creative Community](#)' project led by Natalie Deane, pupils are [Responding To and Working with Artists](#).

In this post, Natalie shares with us how she adapted her plans to fit with visiting artist schedules, by devising a 'filler' activity inspired by one of the artists pupils engaged with on the Yorkshire Sculpture Park trip.



---

	Please log in here to access full content.	
Username	<input type="text"/>	
Password	<input type="password"/>	
	<input type="button" value="Login"/>	<input checked="" type="checkbox"/> Remember me
	<a href="#">Forgot Password</a>	



To access all content, I would like to join as...

**An Individual**



Creative practitioners, educators, teachers, parents, learners...

From £3.50

**An Organisation...**



Schools, Colleges, Arts Organisations: Single and Multi-Users  
**From £42**

*AccessArt is a UK Charity and we believe everyone has the right to be creative. AccessArt provides inspiration to help us all reach our creative potential.*

---

---

## **Exploring A Midsummer Night's Dream: Making Magic Spells**

---

# Exploring Macbeth Through Art: Out Damn Spot!

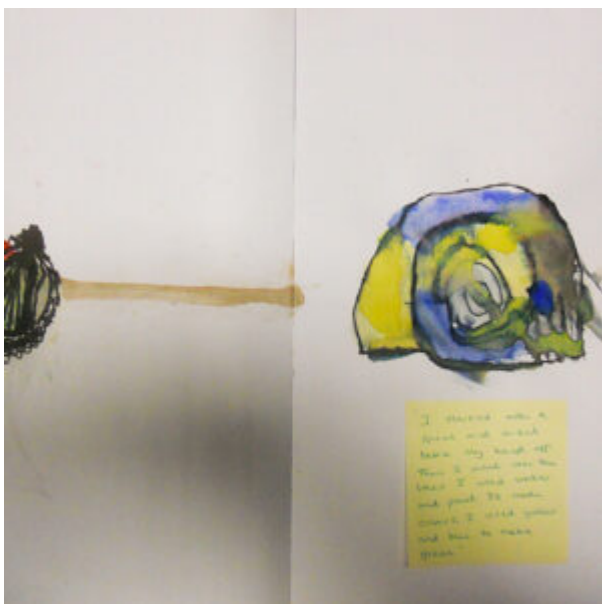
---

## Movement Maps

---

## Water Soluble Felt-Tips With Complementary Colours

## See How This Resource Is Used in Schools...









## You May Also Like...

Pathway: Spirals



[This resource is in the 'Spirals' pathway.](#)

the drawing journey



## Layered Colour Gestural Drawing



---

## Art Club Cafe

Use a range of making and modelling techniques to create a cafe, including modroc doughnuts and fabric pizzas!



---

# **Be Inspired by Flowers in a Glass Vase by Jan Davidsz de Heem**

This resource looks at 'Flowers in a Glass Vase' by the Dutch painter, Jan Davidsz de Heem (1606-1684), on permanent display at the Fitzwilliam Museum, Cambridge, and how it might inspire your own creative responses and experimentation with colour.

---

## **Galaxy Painting**

---

## **Classical Inks**

---

## **Painting A Rainbow Forest**

Rachel Burch, Head of Art at Burton Hathow Preparatory School and her pupils paint their own large scale, colourful forest inspired by AccessArt's resource 'Painting A Bluebell Forest'. Rachel shares her process in this resource.

---

# **Inspired by Edgar Degas: Printmaking, Drawing & Sculpture at the Fitzwilliam Museum Cambridge with AccessArt**

---

## **Colour Wheel for Infants and Juniors**

In this post, artist educator Rosie James, shows her open-ended and experiential approach to introducing the colour wheel to primary aged children throughout the key stages.

---

## **Sculpture Project Inspired by Egyptian Wall Painting**

This resource shares a project which explored mould making, casting and painting in the creation of a sculpture inspired by Egyptian wallpainting, in particular Nebamun hunting in the marshes, Nebamun's tomb-chapel, which can be seen in the

British Museum, London

The project can be adapted for use in KS 2 and 3, and can be used to accompany a study of Egyptian Art / Hieroglyphics.

---

# Watercolour Portrait

## You May Also Like...

Visual Arts Planning Collections:  
Portraits

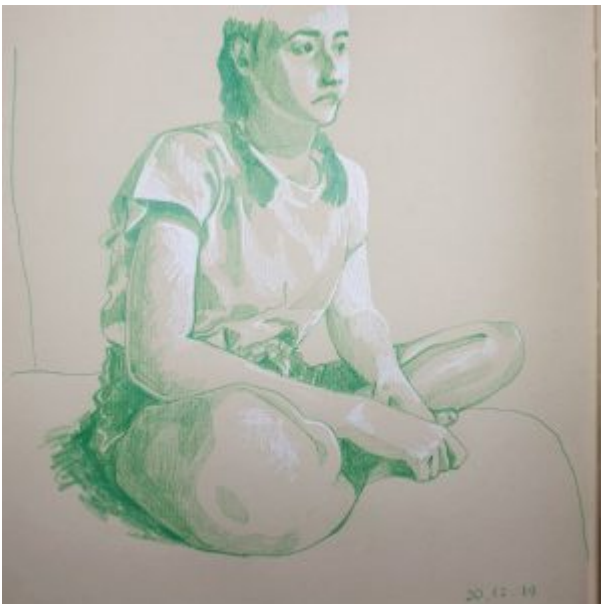


watercolour





## foreshortened sketches



---

## Wave Bowls

In this session children make 'wave bowls' with Paula Briggs – a session where the pieces literally 'come together'.

---

# **Drawing with Objects by Melissa Pierce Murray**

Teenagers explore ideas of placement with artist Melissa P Murray by arranging or assembling objects to make compositions or maquettes.

---

## **Exploration of Watercolour in the Studio**

After having studied watercolour paintings at the Fitzwilliam Museum Cambridge with AccessArt, teachers were invited to undertake their own exploration of working with watercolour, including colour mixing, paint techniques, and intention. This resource shares the processes and outcomes of the practical studio session.

---

## **Introduction to Watercolour**

## **You May Also Like...**

## Pathway: Exploring Watercolour



[Featured in the 'Exploring Watercolour' pathway](#)

## Pathway: Mixed Media Land and city scapes



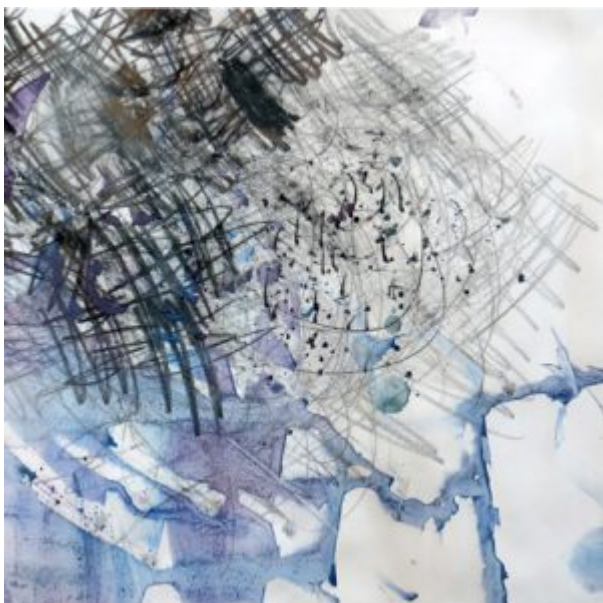
[This is featured in the 'Mixed Media Land and City Scapes' pathway](#)



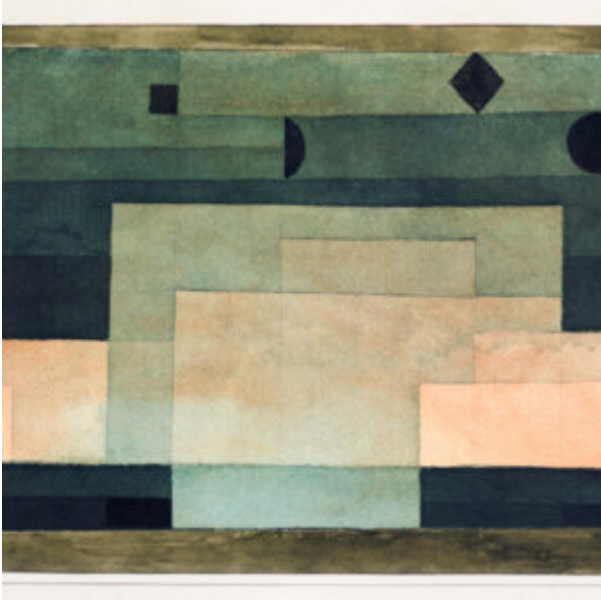
# **Collection of Landscape Resources by Hester Berry**



## **PAINTING THE STORM AT BOURN PRIMARY SCHOOL**



## **Talking Points: Paul Klee**



## **part 2: Exploration of Watercolour in the studio**



---

# **Exploring Watercolour at the**

# Fitzwilliam Museum Cambridge with AccessArt

## part 1: Introduction to Watercolour



The resource describes and demonstrates individual watercolour techniques, and then shows examples of these techniques in paintings from the Fitzwilliam Collection.

## part 2: Exploration of Watercolour in the studio





After studying paintings from the collection at first hand and identifying how various marks within the paintings may have been made, teachers undertake their own exploration of working with watercolour.

The  
Fitzwilliam  
Museum  
CAMBRIDGE



UNIVERSITY OF CAMBRIDGE  
**MUSEUMS**  
& BOTANIC GARDEN



Supported using public funding by  
**ARTS COUNCIL  
ENGLAND**



# **Painting the Storm, at Bourn Primary Academy**