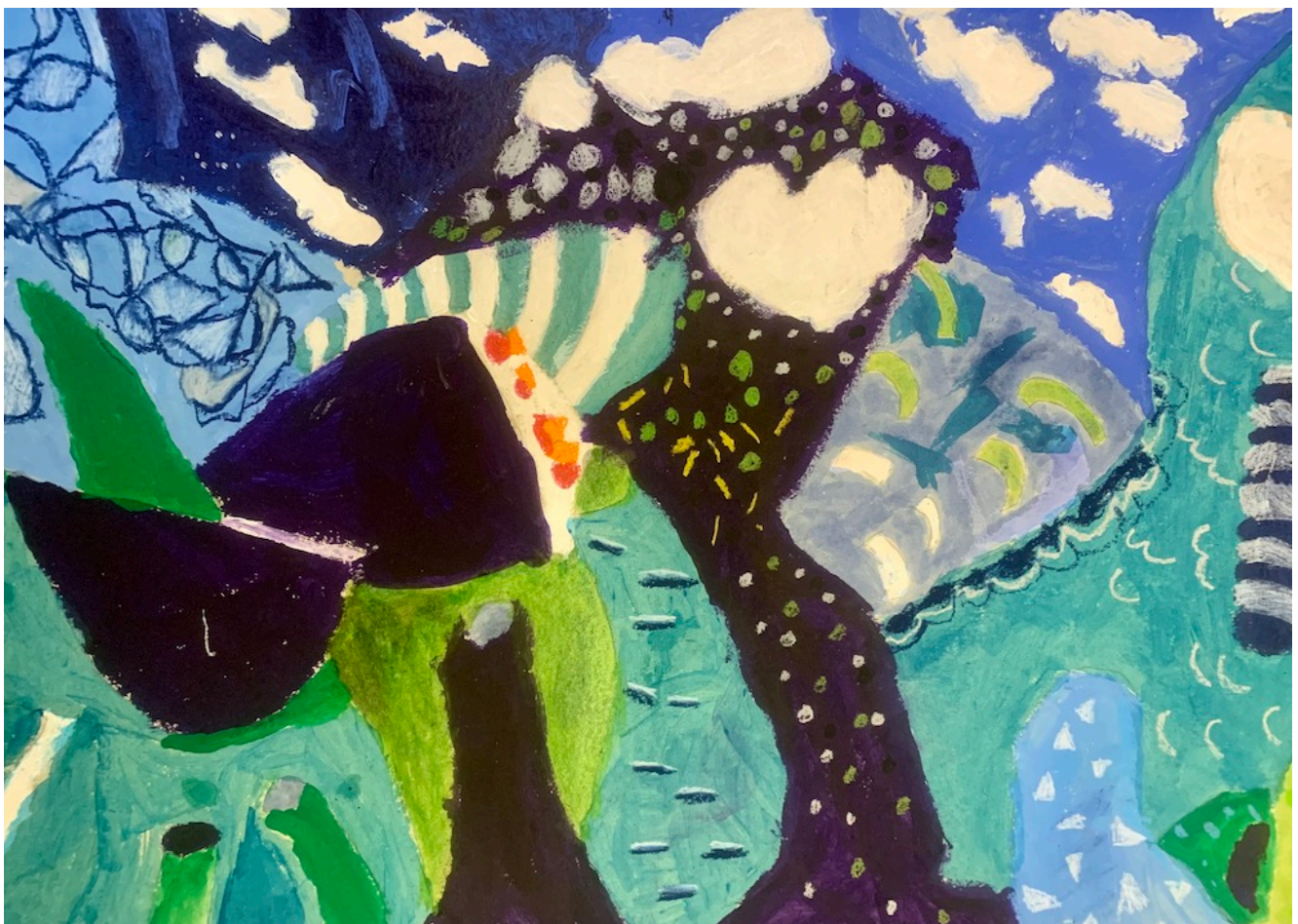


# Sculptural Environments Inspired by Hockney

[By Natalie Deane](#)

In this project Natalie Deane, an artist and specialist teacher for Primary, Art, Craft & Design at Battye Ford Primary School will show you how to facilitate a project that explores mark making, collaboration and sculpture. In this activity children create a class installation bursting with dynamic marks, beautiful forms and striking colours, all inspired by David Hockney.



---

	Please log in here to access full content.
--	--

Username	<input type="text"/>
Password	<input type="password"/>
	<input type="button" value="Login"/> <input checked="" type="checkbox"/> Remember me
	<a href="#">Forgot Password</a>

To access all content, I would like to join as...

**An Individual**



Creative practitioners, educators, teachers, parents, learners...

From £3.50

**An Organisation...**





Schools, Colleges, Arts Organisations: Single and Multi-Users  
**From £42**

*AccessArt is a UK Charity and we believe everyone has the right to be creative. AccessArt provides inspiration to help us all reach our creative potential.*

---

**See This Resource Used In  
Schools...**



