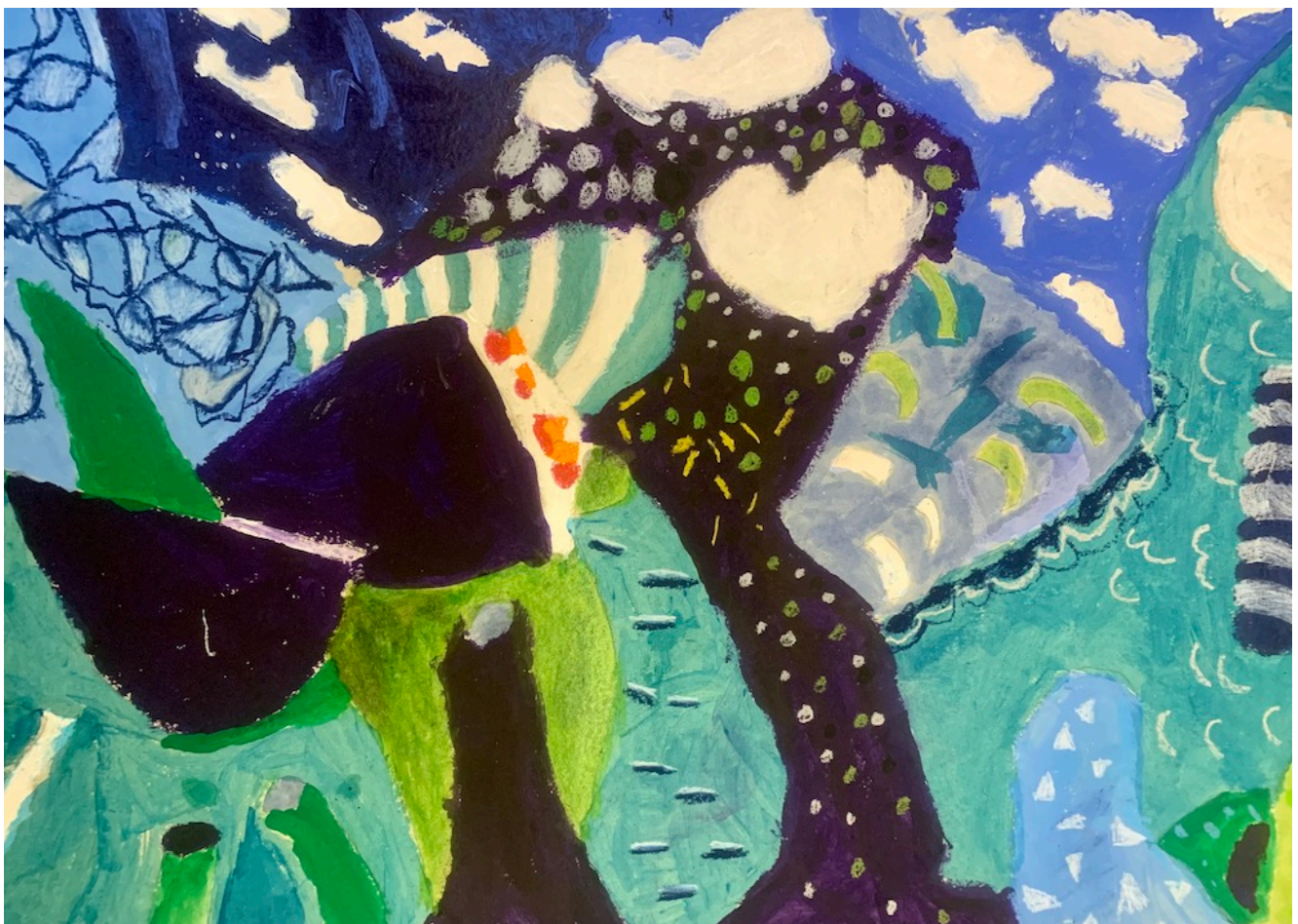


Sculptural Environments Inspired by Hockney

[By Natalie Deane](#)

In this project Natalie Deane, an artist and specialist teacher for Primary, Art, Craft & Design at Battye Ford Primary School will show you how to facilitate a project that explores mark making, collaboration and sculpture. In this activity children create a class installation bursting with dynamic marks, beautiful forms and striking colours, all inspired by David Hockney.



	Please log in here to access full content.
--	--

Username	<input type="text"/>
Password	<input type="password"/>
	<input type="button" value="Login"/> <input checked="" type="checkbox"/> Remember me
	Forgot Password

To access all content, I would like to join as...

An Individual



Creative practitioners, educators, teachers, parents, learners...

From £3.50

An Organisation...



Schools, Colleges, Arts Organisations: Single and Multi-Users
From £42

AccessArt is a UK Charity and we believe everyone has the right to be creative. AccessArt provides inspiration to help us all reach our creative potential.

**See This Resource Used In
Schools...**



