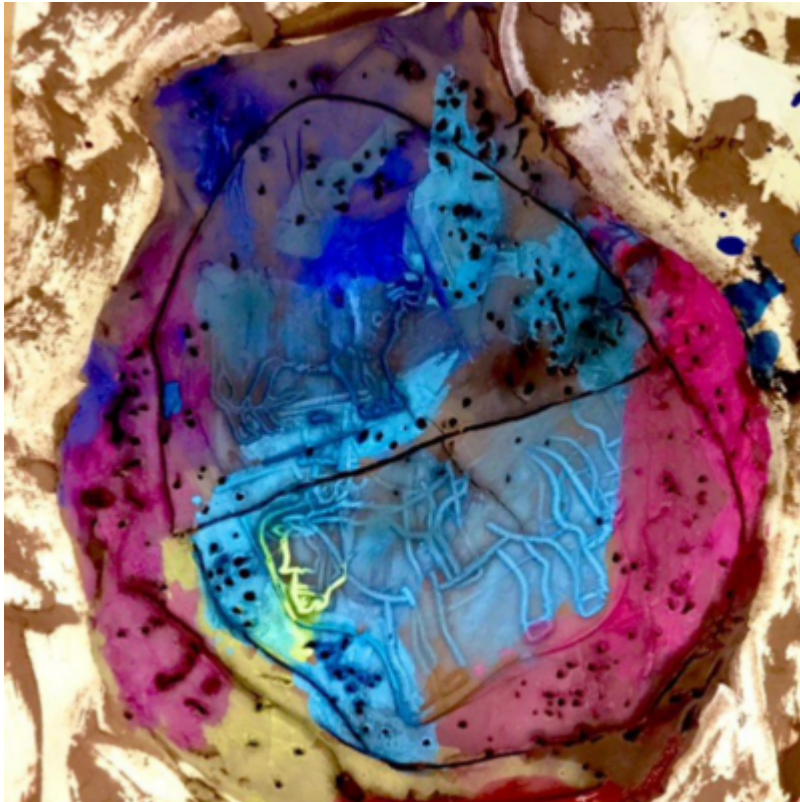


Special Educational Needs and Disabilities (SEND)



AccessArt teaching approaches are transferable across different settings, ages and abilities. We recognise that in SEND settings in particular, you will want to sensitively adapt activities and approaches to the unique needs of your audience.

Whilst you will enjoy adapting the majority of [our resources](#), we have highlighted a selection below which are particularly relevant for learners with special educational needs.

Please [get in touch](#) if you would like to contribute to our SEND resources.

pedagogy in 250 words

In this [Pedagogy in 250 Words](#), SEN specialist and Art and DT Lead [Clare Boreham](#), at Benton Dene School, shares with us the importance of adapting art lessons to include learners with different specific educational needs and discusses how she does this.

How Do We Adapt our Art Teaching to Include Children with Specific Educational Needs?



Watch the video to find out more about how to use the following approaches in your art teaching...

- Responsive and reflective approaches
- Scaffolding and co-construction
- Observation and feedback

Explore Artists and artwork

Explore the work of artists with specific educational learning needs and disabilities and see how learners might respond to the artwork.

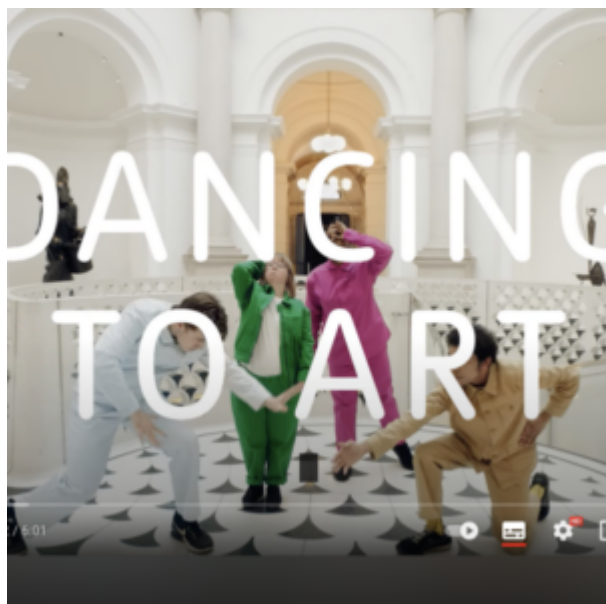
Charlie French



Talking Points: Nnena Kalu



Talking Points: Dancing to Art



DIP YOUR TOES INTO resources for send learners

Find a selection of resources designed for SEND learners...

Giant Jewellery: Multimedia Response to Yayoi Kusama



Adapting AccessArt: Making Birds Pathway for Pupils With Specific Educational Needs



Dreaming with watercolour



Playful Making Inspired by Nnena Kalu



See All AccessArt SEND Resources