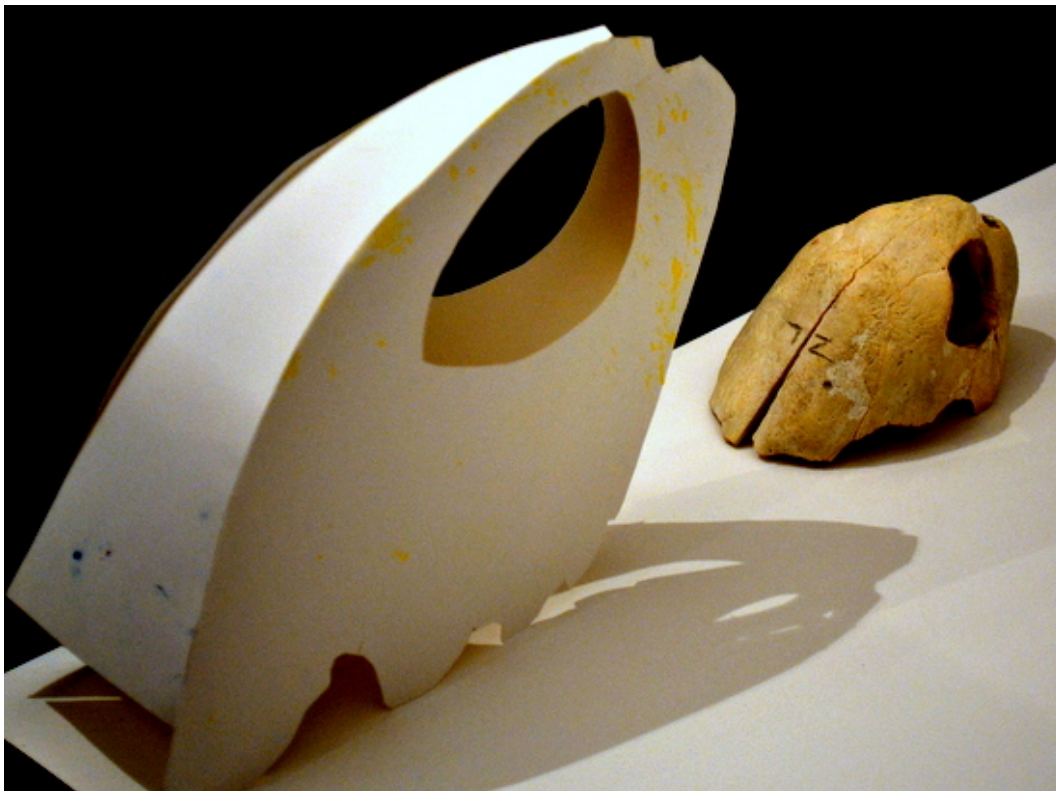


Skull Sculptures: using Paper and Tape to Interpret Form

By Sheila Ceccarelli

Teenagers interpret the form and structure of animal skulls, by making three dimensional skull sculptures in heavy, white paper and coloured tape or masking tape.



Sea Turtle, by Tilly

	Please log in here to access full content.	
Username	<input type="text"/>	
Password	<input type="password"/>	
	<input type="button" value="Login"/>	<input checked="" type="checkbox"/> Remember me
	Forgot Password	

To access all content, I would like to join as...

An Individual



Creative practitioners, educators, teachers, parents, learners...

From £3.50

An Organisation...



Schools, Colleges, Arts Organisations: Single and Multi-Users
From £42

AccessArt is a UK Charity and we believe everyone has the right to be creative. AccessArt provides inspiration to help us all reach our creative potential.
