

# Henry Moore's Shelter Drawings

This resource shares how schools might use Henry Moore's Shelter Drawings to inspire creativity in the classroom. [See this resource as part of a pathway for use in schools here.](#)

The Shelter Drawings can be used to:

- Develop visual literacy skills
- Explore watercolour, ink and wax resist
- Explore how to convey form in drawings by using contour lines
- Explore Chiaroscuro (light / dark) to convey mood
- Explore perspective to build sense of claustrophobia / confinement
- Explore themes of shelter, confinement, safety, being trapped

## Context & Background



Tentoonstelling beeldhouwwerken Sonsbeek Arnhem. Family Group ( Henry Moore ), Bestanddeelnr 905-1531.jpg

Henry Moore was a sculptor and draughtsman.

When introducing his drawings to children, it's important to remember the fact that he was a sculptor - his drawings have a characteristic "sculptural" feel. Understanding this will help children explore how they convey form in their own drawings. Moore's sculptures were monumental, inhabiting the landscape, but his studio was full of small maquettes (models) inspired by fist sized pieces of flint and bone. Even his drawings of these small objects feel "sculptural" and solid.



Three Reclining Figures 1975 HMF 75(8) watercolour wash, charcoal, chalk, gouache on blotting paper 263 x 217mm photo: The Henry Moore Foundation archive, Michel Muller. Reproduced by kind permission of the Henry Moore Foundation

## The Shelter Drawings





Row of Sleepers 1986 by Henry Moore. Reproduced by the Henry Moore Foundation

Some records say Moore made his shelter drawings after taking shelter one night in 1940 in Belsize underground station, when Moore was fascinated by the families camping out underground. Other records say Moore took many underground journeys and saw the figures in the platforms as the trains passed by.

Returning to his studio, the Shelter Drawings were often made

from his memory of the experience. The images capture feelings of confinement and claustrophobia; the figures are anonymous but relationships between figures are clear. The figures in the underground, often seated or reclining, also reminded Moore of his sculptures.

See the clip above at 10 minutes 30 seconds for images of Moore making his Shelter Drawings

[See this resource as part of a pathway for use in schools here.](#)

---

**This is a sample of a resource created by UK Charity AccessArt. We have over 850 resources to help develop and inspire your creative thinking, practice and teaching.**

**AccessArt welcomes artists, educators, teachers and parents both in the UK and overseas.**

**We believe everyone has the right to be creative and by working together and sharing ideas we can enable everyone to reach their creative potential.**

# You May Also Like...

## Pathway: Exploring Form Through Drawing



[This is featured in the 'Exploring Form Through Drawing' pathway](#)

Watercolour Washes Inspired by the Tapestries of Henry Moore



---

# Nursery Night Time Collage

Inspired by the AccessArt Village, artist Rachel Thompson works with pre-school aged children in St Matthew's Nursery School, Cambridge to make their very own night time scenes with collage and wax-resist.

---

# Japan – Ceramics Inspire Painting and Painting Inspires Ceramics

Jan Miller shares a class project that uses the work of a contemporary Japanese ceramicist to inspire vibrant paintings in a variety of materials. The children then used their own art to design ceramic vessels.

---

# Making an Ink and Wax Village with Pupils in Mansfield

---



# Wax Resist Autumn Leaves by Rosie James

See the Resource Used in Schools...







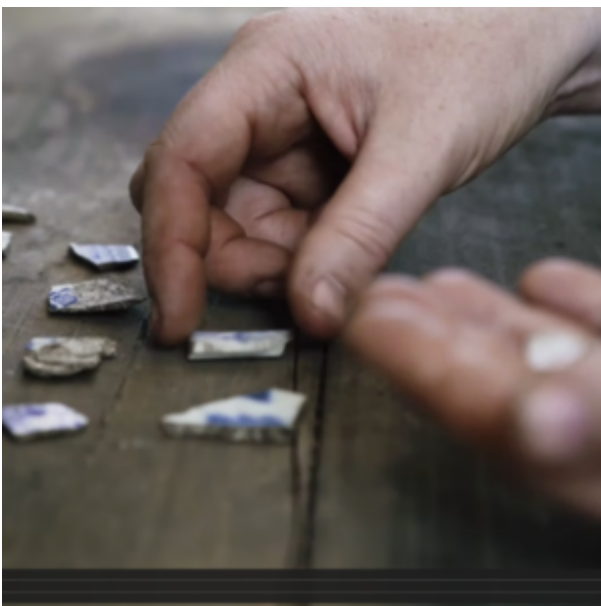
# You May Also Like...

## Pathway: Explore and Draw



## [Featured in the 'Explore and Draw' Pathway](#)

## Talking Points: Artists as Collectors and explorers



## Talking Points: What is Composition



---

## Red to Green: Wax Resist and Scraffito

---

## Painting the Storm, at Bourn Primary Academy

---

# Wax Resist with Coloured Inks and Sgraffito on Foamboard

---

## Nest

See This Resource Used in Schools...









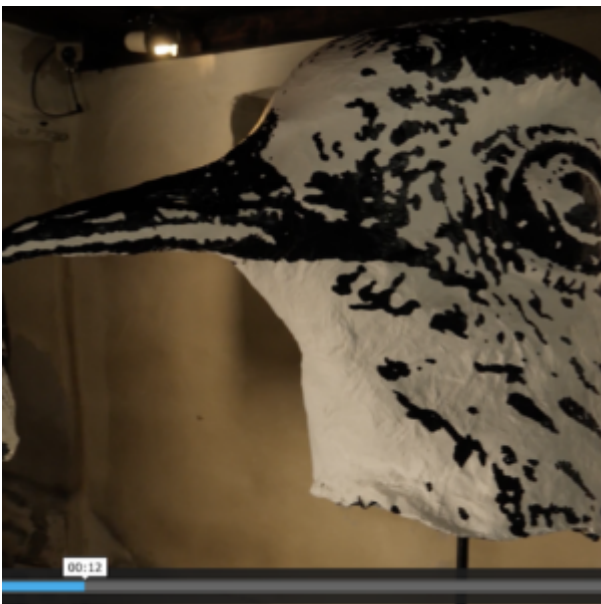
## You May Also Like...

**Pathway:      Sculpture,      Structure,  
Inventiveness & determination**



**This is featured in the 'Sculpture, Structure, Inventiveness & Determination' pathway**

**Talking Points: What can we learn from birds**



**Drawing source material: nests**



---

# Making Batik Textiles in the Classroom

Simple method adapted for classroom use – for all ages.

---

## Experimenting With Batik – Using Hot Wax and Dyes on Fabric

Exploring batik. [Full AccessArt Members Only](#)