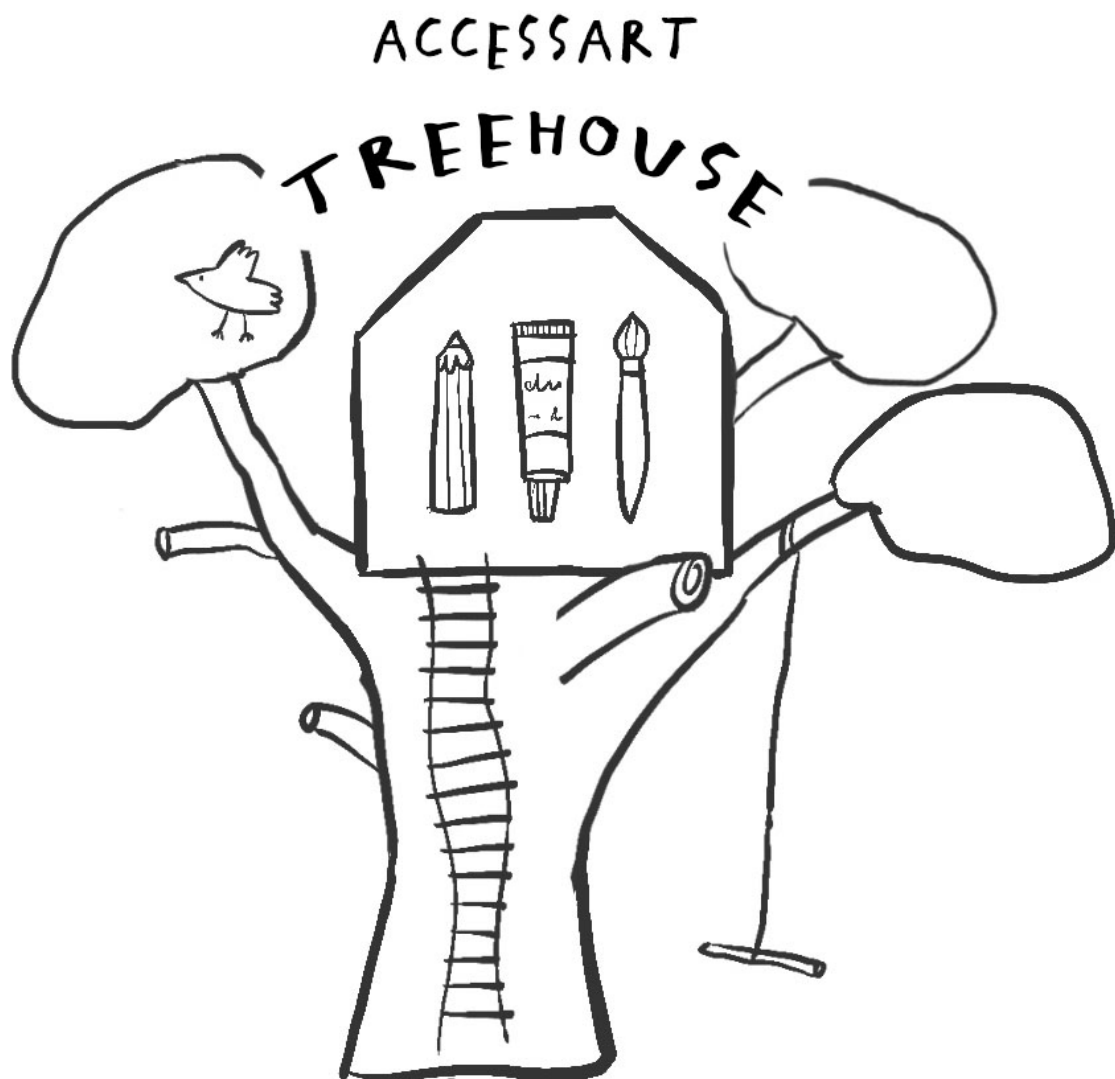


**Welcome to AccessArt
Treehouse!**





You've arrived at a safe place!

AccessArt believes that through gentle, holistic art education, we can empower children and young people to find their voice.

At AccessArt Treehouse, we recognise that mainstream schooling does not suit every child or young person. Whether it is a positive, long-term decision to home educate, or a more reactive, short-term decision made out of necessity, we understand that pupils outside the formal education system are still entitled to an excellent art education.

Moreover, engagement with a wide range of artistic materials, processes and ideas can be hugely beneficial to sensitive or vulnerable pupils. Art can help these children and young people to ground themselves, put down roots and grow. It can help them find their voice, express their emotions and connect with others.

Through AccessArt Treehouse, the AccessArt team supports parents, carers, therapists and educators of children aged 4 to 16 in accessing high-quality, adaptable and inspirational visual arts resources to use in a variety of settings.

We aim to help you provide a gentle, appropriate and enriching art education experience to the children and young people in your care, free from pressure to perform.

Art Education Outside Formal School Settings

• Q. What is AccessArt Treehouse?

AccessArt Treehouse is a curated collection of visual art education resources created and commissioned by AccessArt. All the resources signposted from this section are adaptable and appropriate for use by educators with vulnerable and sensitive children aged 5 to 16, for whom formal education in school might not be an option.

We aim to enthuse and enable children, young people, and their responsible adults to explore art as a valuable tool in helping all learners understand and develop their sense of self.

As with all AccessArt resources, our emphasis is on activities that enable a journeyful, openhearted approach. Responsible adults or educators are there as facilitators, modelling traits of curiosity, imagination, and exploration – no prior experience of the visual arts is needed. For many learners, the activities will help create a sense of wellbeing and empowerment, but for others, they may help build understanding of the potential for creative careers.

AccessArt is a [Registered Charity and a Subject Association for Art](#). We have over 25 years of experience in creating high-quality resources, and our vision has helped thousands of schools develop an exciting and dynamic visual arts education pedagogy.

Through AccessArt Treehouse, we hope to help audiences who sit outside mainstream education benefit from our approach and feel included and connected to a wider world.

- Q. What kinds of settings might enjoy using AccessArt Treehouse?

The following settings may find AccessArt Treehouse inspiring. Please note this is not exclusive, and we are committed to AccessArt

Treehouse becoming as inclusive as possible:

- Home educators
 - Settings working with EBSA
 - Settings working with learners awaiting or receiving CAMHS help
 - Neuroinclusive settings
 - Nurture groups
 - Hospital inpatients/hospital schools
 - Settings which provide extracurricular activities which help widen the experiences open to particular learners, e.g after after-school clubs, registered community clubs, i.e., Brownies/Cubs, museums and galleries
 - Parents/informal home activities
 - Artist educator offers (e.g., [AccessArt Tiny Art Schools](#))
 - Settings which work with Children in Care
 - Young Offender Institutions
- Q. How much does it cost?

To access all resources signposted via the AccessArt Treehouse area of the site, you need to be an [AccessArt member](#). This means existing members have access to all resources. If you would like to take out a new membership, please visit [this page](#).

Membership fees cost £42 per year, or £96 per year for up to 8 users working within one setting. Please note that it is the number of teachers/educators using the resources that we count, not the number of children you use the resources with.

Any enquiries should be sent to andrea@accessart.org.uk.

- Q. How can we connect to other AccessArt Treehouse users?

Join our new Facebook Group – [AccessArt Treehouse](#) to connect to other responsible adults working with children outside formal education.

AccessArt Treehouse is a curated collection of visual art education resources created and commissioned by AccessArt. All the resources signposted from this section are adaptable and appropriate for use by educators with vulnerable and sensitive children aged 5 to 16, for whom formal education in school might not be an option.

We aim to enthuse and enable children, young people, and their responsible adults to explore

art as a valuable tool in helping all learners understand and develop their sense of self.

As with all AccessArt resources, our emphasis is on activities that enable a journeyful, openhearted approach. Responsible adults or educators are there as facilitators, modelling traits of curiosity, imagination, and exploration – no prior experience of the visual arts is needed. For many learners, the activities will help create a sense of wellbeing and empowerment, but for others, they may help build understanding of the potential for creative careers.

AccessArt is a [Registered Charity and a Subject Association for Art](#). We have over 25 years of experience in creating high-quality resources, and our vision has helped thousands of schools develop an exciting and dynamic visual arts education pedagogy.

Through AccessArt Treehouse, we hope to help audiences who sit outside mainstream education benefit from our approach and feel included and connected to a wider world.

The following settings may find AccessArt Treehouse inspiring. Please note this is not exclusive, and we are committed to AccessArt Treehouse becoming as inclusive as possible:

- Home educators

Settings working with EBSA

- Settings working with learners awaiting or receiving CAMHS help
- Neuroinclusive settings
- Nurture groups
- Hospital inpatients/hospital schools
- Settings which provide extracurricular activities which help widen the experiences open to particular learners, e.g after after-school clubs, registered community clubs, i.e., Brownies/Cubs, museums and galleries
- Parents/informal home activities
- Artist educator offers (e.g., [AccessArt Tiny Art Schools](#))
- Settings which work with Children in Care
- Young Offender Institutions

To access all resources signposted via the AccessArt Treehouse area of the site, you need to be an [AccessArt member](#). This means existing members have access to all resources. If you would like to take out a new membership, please visit [this page](#).

Membership fees cost £42 per year, or £96 per year

for up to 8 users working within one setting. Please note that it is the number of teachers/educators using the resources that we count, not the number of children you use the resources with.

Any enquiries should be sent to andrea@accessart.org.uk.

Join our new Facebook Group – [AccessArt Treehouse](#) to connect to other responsible adults working with children outside formal education.

Join AccessArt!

To access all resources signposted via the AccessArt Treehouse area of the site, you need to be an [AccessArt member](#). This means existing members have access to all resources. If you would like to take out a new membership please visit [this page](#).

Membership fees cost £42 per year, or £96 per year for up to 8 users working within one setting. Please note that it is the number of teachers/educators using the resources that we count, not the number of children you use the resources with.

Any enquiries should be sent to andrea@accessart.org.uk.



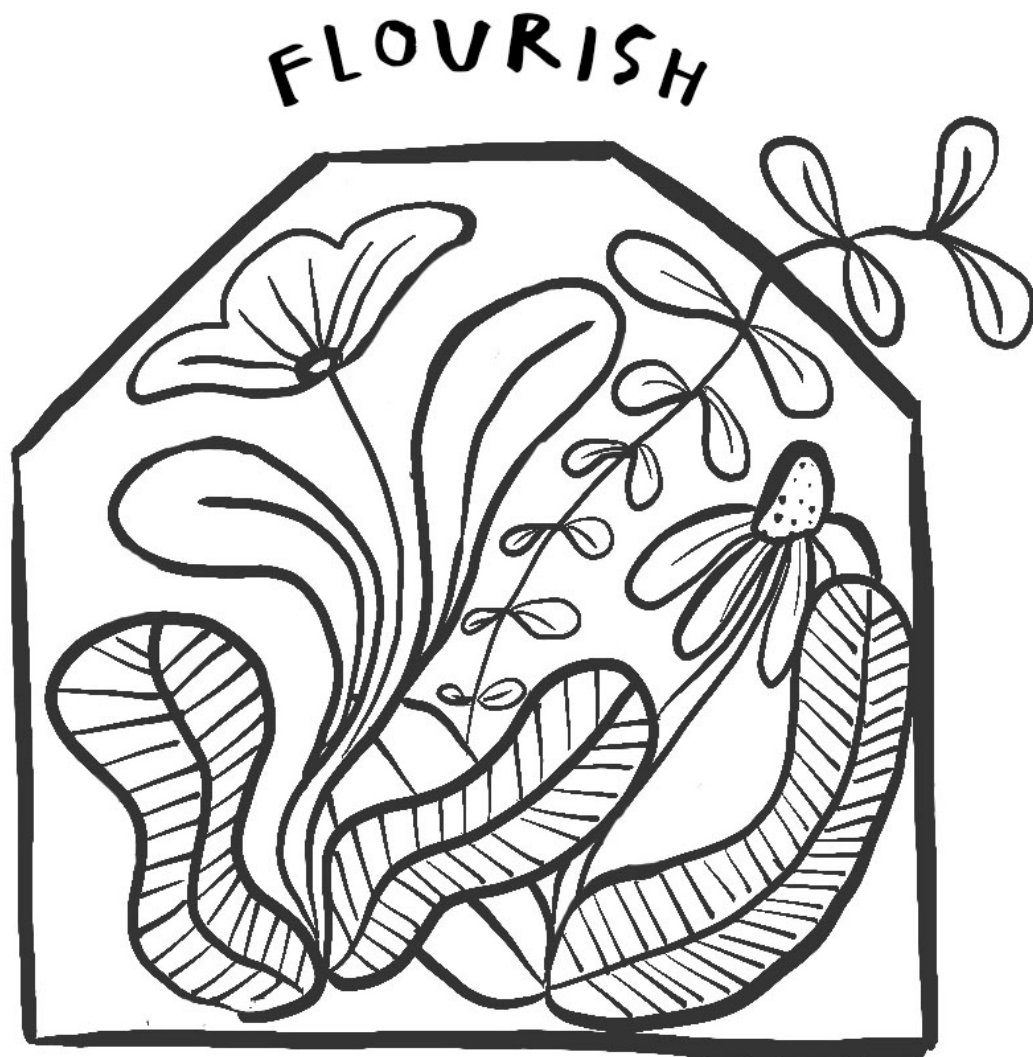
Join the first-ever AccessArt Art Week this

Summer!

This Summer, dedicate a week to the theme “Flourish” and celebrate all things growth!

The Art Week is designed for ages 5 to 11 but could be adapted for older ages or SEND education. It’s fully flexible, so you choose activities which will suit your setting and schedule.

Best of all, it’s completely free to take part in the AccessArt Art Week for all AccessArt members! Whether you are a school, home educator, family, or artist educator working in a community setting, please join us! [Find out more...](#)



Treehouse challenges

The AccessArt Treehouse Challenges aim to inspire learners, helping to find a creative way of working that enables and excites them.

We will be sharing a monthly challenge with our Treehouse community. Share your outcomes on [AccessArt Treehouse](#).

glimpses and folds: a sketchbook challenge



AccessArt Treehouse Case studies

We hope to share the voices of educators working outside of mainstream educational spaces with our Treehouse community.

If you would like to share what you do in your setting, please [get in touch](#).

Art in Times of Ill Health



explore by audience

Find something for your educational setting here...

Home Educators



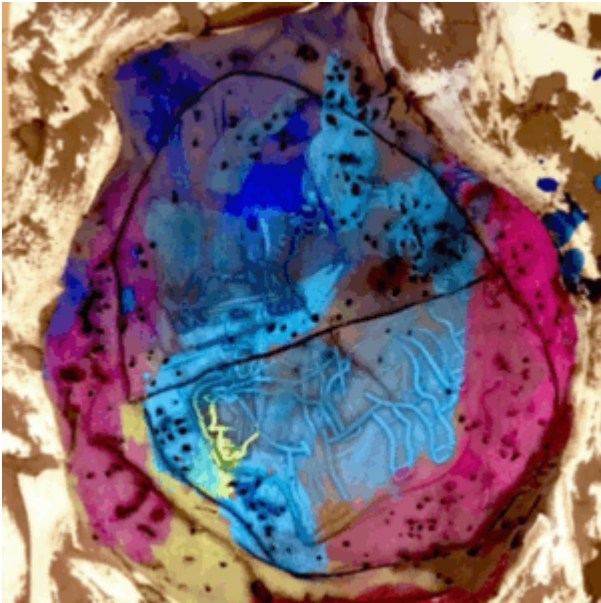
Hospital education



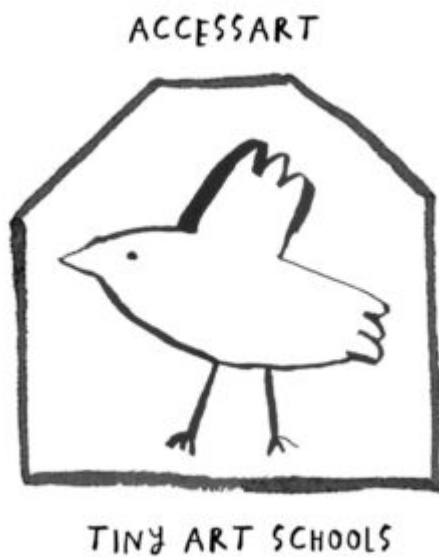
EBSA



SEND



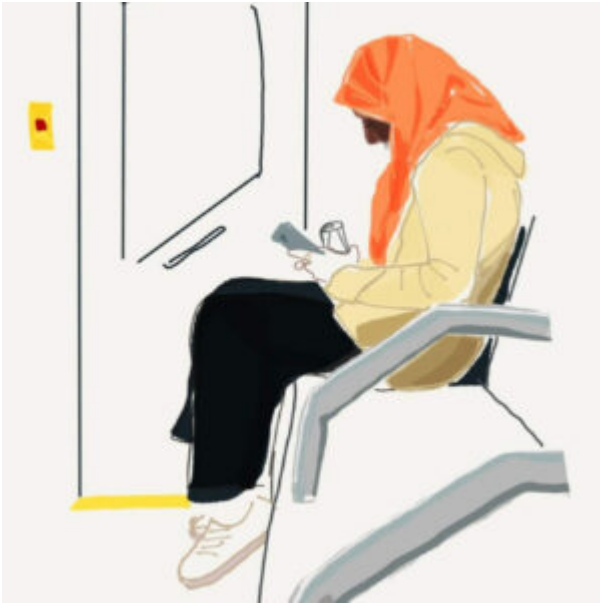
Tiny Art Schools



Arts & Wellbeing



Creative Entitlement



Explore Teaching Pathways (ages 5 to 11)



explore resources for ages 11 – 16

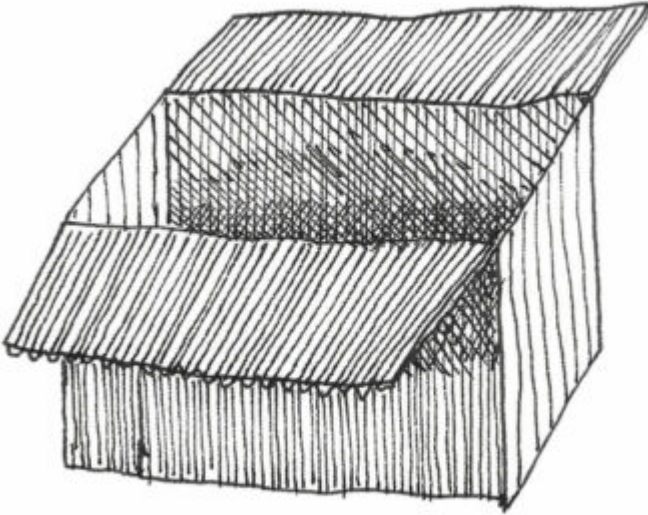


Be Inspired by our Pedagogy & Viewpoints

Pedagogy



Viewpoints



see all resources



explore via disciplines



explore via materials



explore artists

